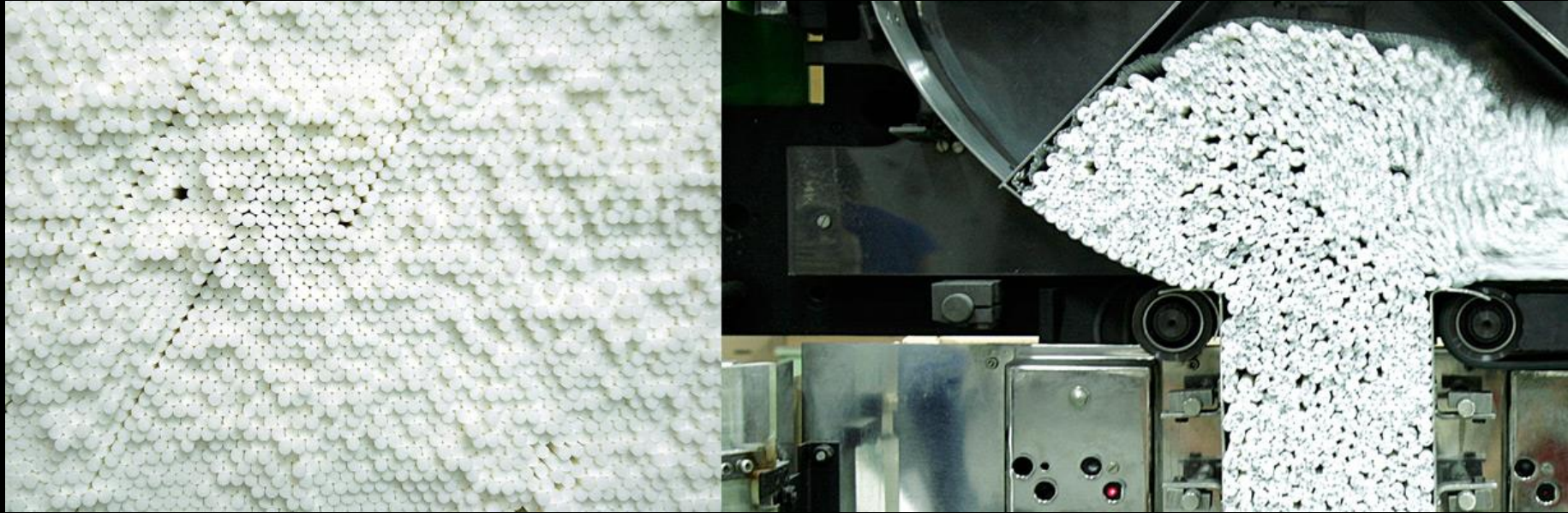




primecom



Tobacco Filter Tubes Manufacturer

Global Cigarette Market

Opportunity and Forecast
(2019-2024)

The market is projected
to reach

US\$ 1,124 Billion by 2024.

Growing at a **CAGR** of around
4.0% during (2019-2024)

imarc



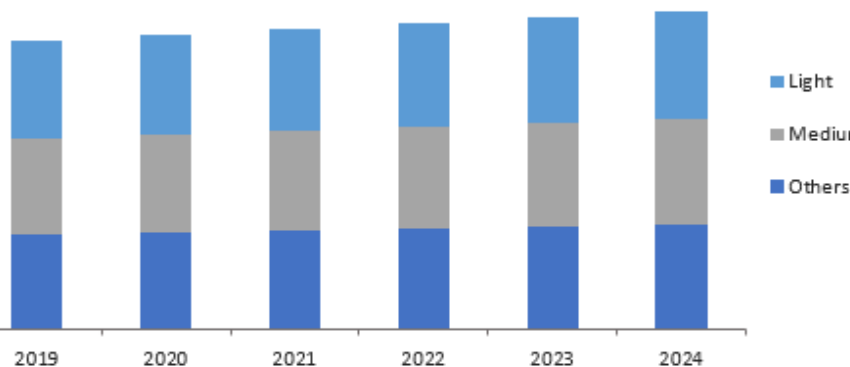
An increasing market with high potential for growth in East Europe

On a geographical front, Asia Pacific, excluding Australia, represents the largest market for cigarettes across the globe followed by Eastern Europe.

Global Cigarette Market

By Type

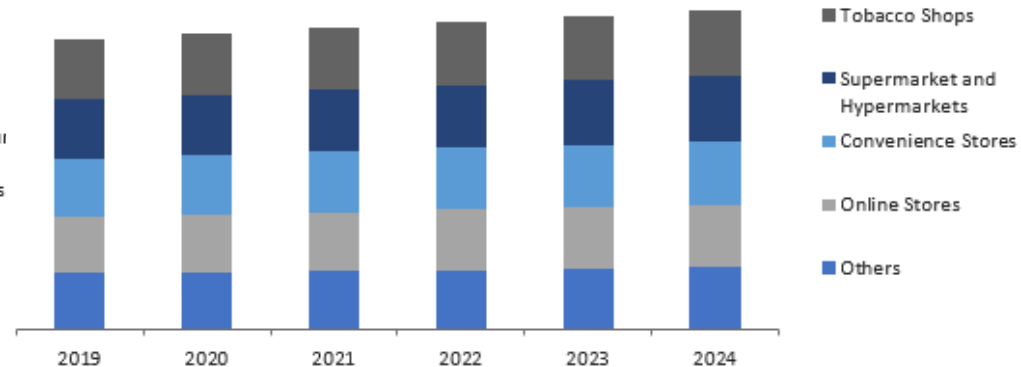
Dummy Data



Global Cigarette Market

By Distribution Channel

Dummy Data



* Source: Imarc Group

There is an increasing trend for RYO

It has been reported that the prevalence of RYO use is increasing in some countries. There is evidence that use has increased in the UK and Europe. It has been argued that this is due to both the tax differential between RYO and FM and easy access to duty-free rolling tobacco in Europe .

In addition, industry documents reveal that the UK has been subject to a systematic campaign to change the image of RYO from a low-cost, down-market, product to a "cool," "natural" choice.

Table 1: Prevalence (%) of exclusive factory-made (FM) use, sometime ("Some") RYO use, and predominant ("Pred") RYO use by country and across waves (weighted data).

Wave (year)	Canada			United States			United Kingdom			Australia		
	FM	Some RYO	Pred RYO	FM	Some RYO	Pred RYO	FM	Some RYO	Pred RYO	FM	Some RYO	Pred RYO
1	81.6	6.2	12.2	92.9	5.1	2.1	69.6	8.8	21.6	73.1	12.6	14.3
2	83.0	5.9	11.5	93.4	4.4	2.3	68.2	7.4	24.4	75.2	9.9	14.9
3	83.7	6.1	10.2	93.1	4.7	2.2	68.7	6.8	24.5	76.4	9.3	14.3
4	83.9	5.1	11.0	91.2	5.9	2.8	67.6	6.2	26.2	77.5	7.8	14.7
5	85.0	4.5	10.5	90.2	6.4	3.3	63.2	7.4	29.4	74.9	9.0	16.1
6	87.3	4.2	8.6	90.3	4.5	5.2	62.3	6.1	31.5	77.3	7.7	15.0
7	87.9	3.3	8.8	89.1	5.2	5.7	62.0	6.6	31.5	78.2	6.4	15.4



There is a big opportunity for sales increase in East European Countries where the segment is not mature



Prime Com is manufacturing filter tubes being one of the 2 manufacturers in Romania

- From 2017 Prime Com Trade Network starting the producing of Tobacco Filters Tubes being one of the two manufacturer in Romania
- We are using best quality papers and filters for producing tobacco filter tubes with no tobacco inside. The raw materials are supplied only from EU company



Our competitive advantage

- ✓ The laboratory tools used and the raw materials for producing the filters tubes are manufactured by **leading European companies**
- ✓ **High quality products** at **competitive price**
- ✓ **High range of products**: own brands and Private labels
- ✓ **Flexibility** and quick response on demand
- ✓ **High capacity of production** sustained by good quality machineries working 24h with 4 shifts
- ✓ We provide **marketing services** to our clients: product design artwork, print formats, etc



We offer a variety of high quality products

All of our products are produced with **high quality acetate filter**

We are producing filter tubes

- ✓ **Regular 15 mm**
- ✓ **Extra long filter 24 mm**
- ✓ **Carbon Filters 15/24 mm**



We are producing different type of packaging

- 200 pieces
- 250 pieces
- 275 pieces
- 500 pieces
- 1000 pieces
- 1100 pieces



Our portfolio includes own brands and Private Label brands



The filter tubes can be filled with tobacco, with manual or automatic machines



Manual filling, with the filter tubes
injector machine

Semi-automatic filling with different
types of electrical machines



In the next slides is a presentation of an easy way to fill the filter tubes with tobacco using a manual injector



1. Take some filter tubes tobacco



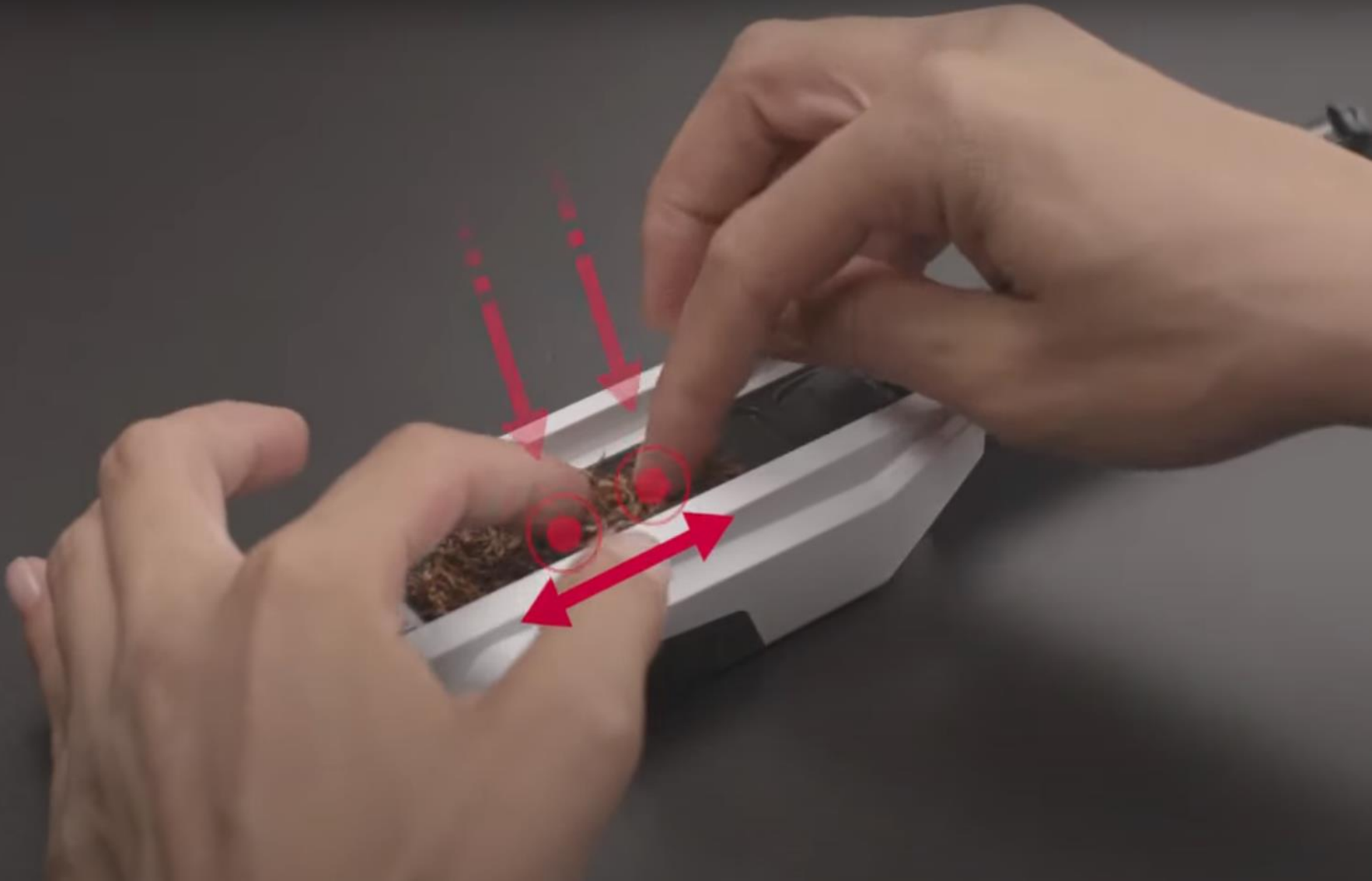
TUBING TOBACCO

0,6 – 1,0 gram

2. Put the tobacco into the injector's recipient



3. Put the tobacco into the injector's recipient



4. The filter tubes injector machine packaging contains a filling aid, use it to press the tobacco

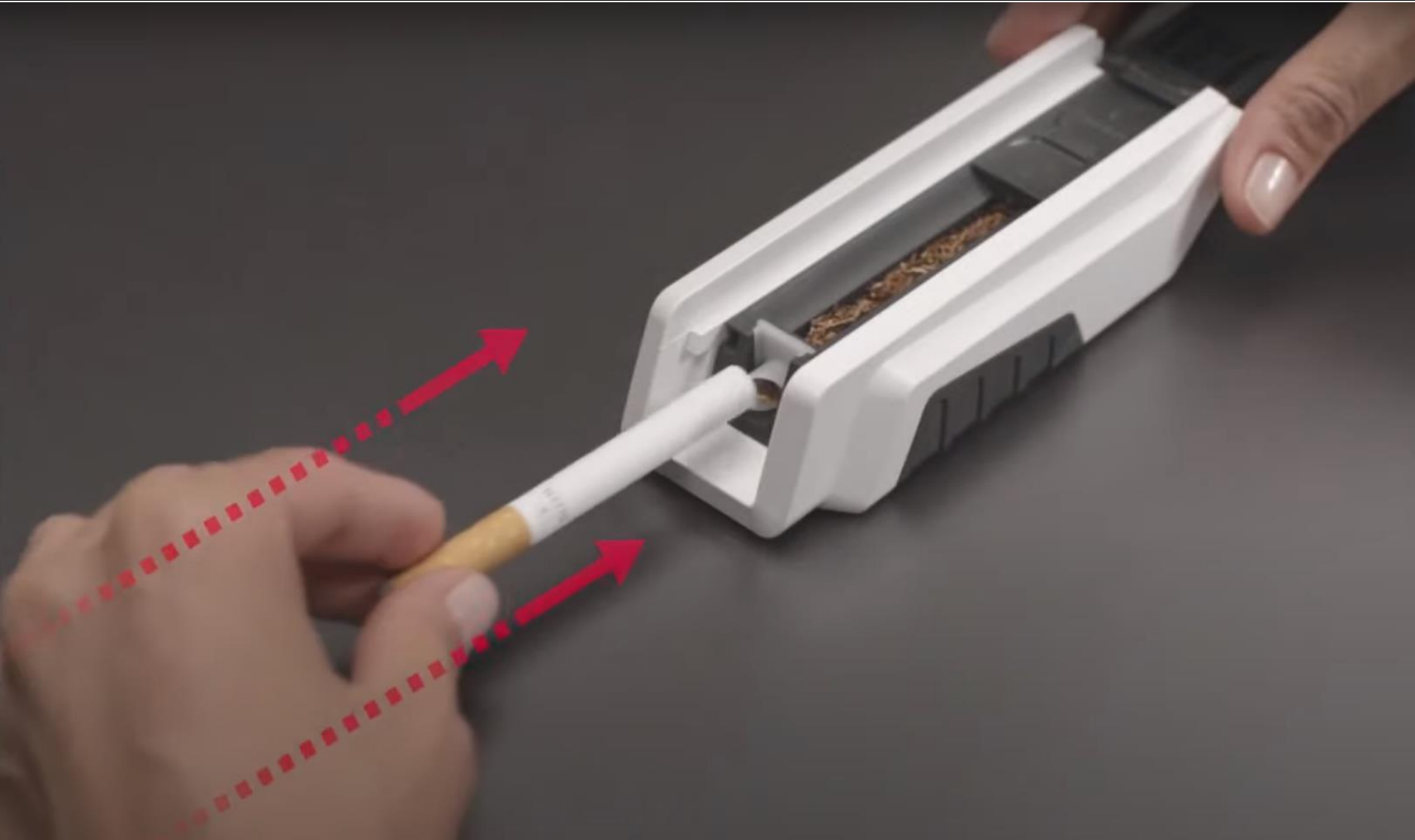
FILLING AID



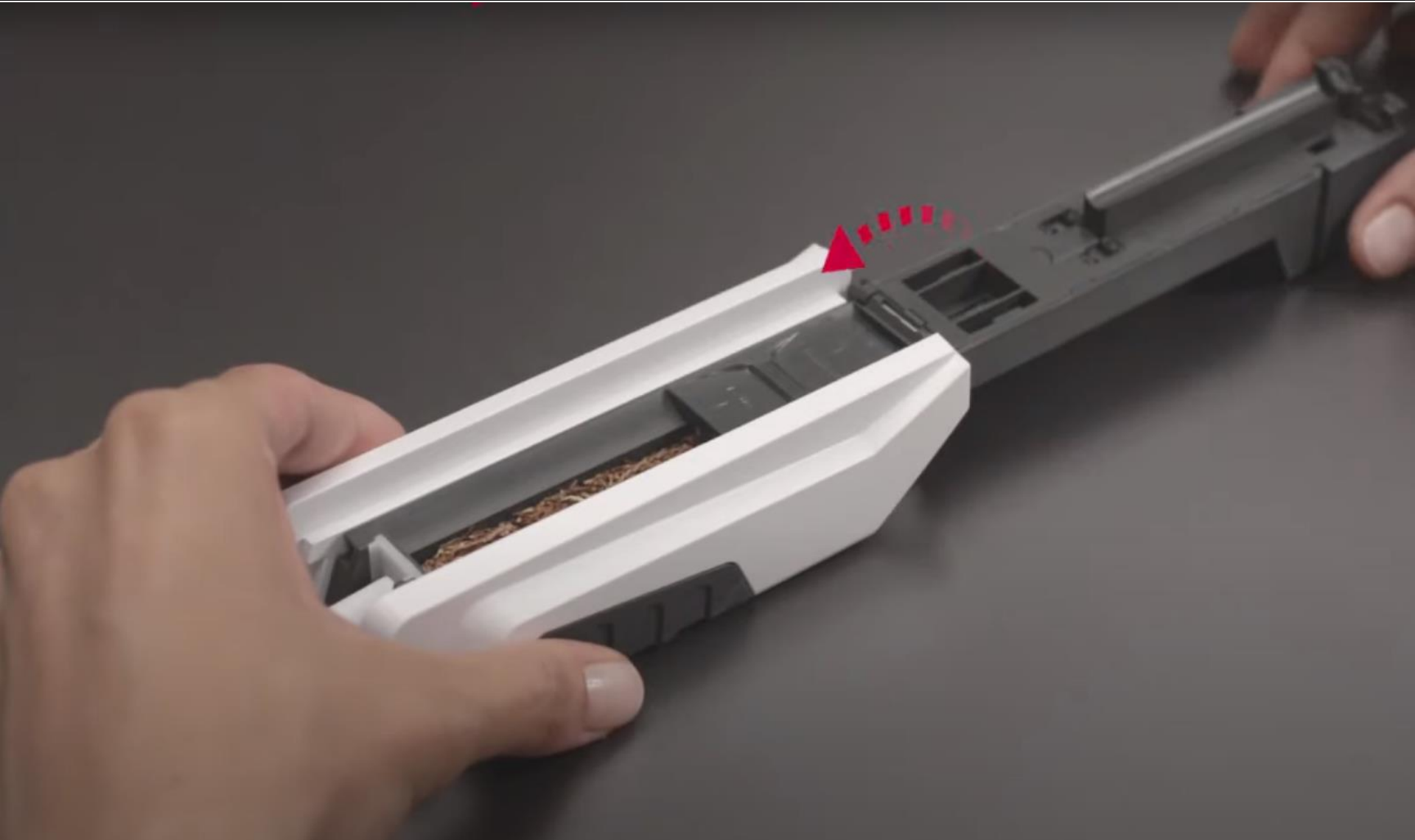
5. With the filling aid, press the tobacco in a straight line to fill the recipient



6. Select a filter tube and attach it to the injector head



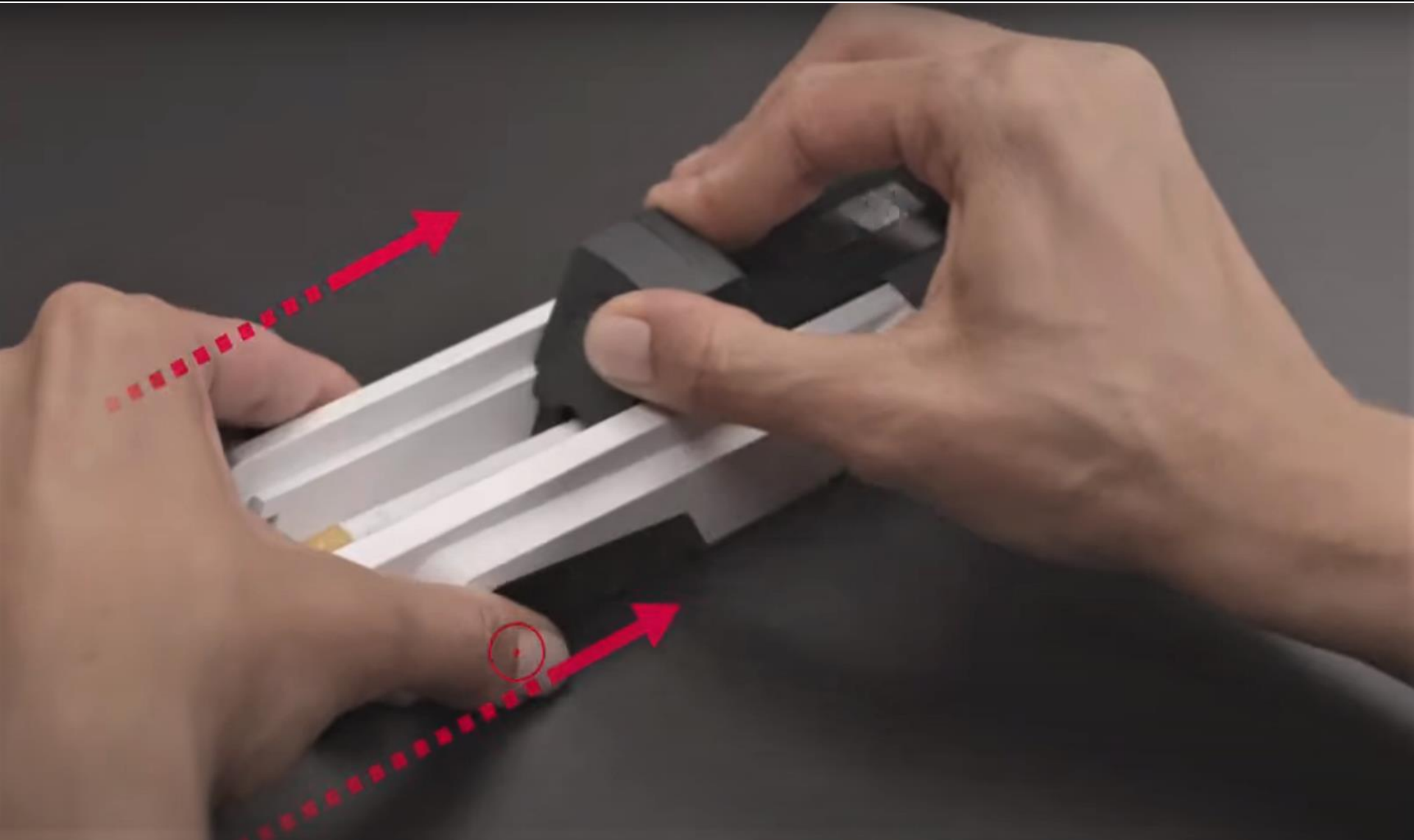
7. After you attach the filter tubes, close the top of the injector



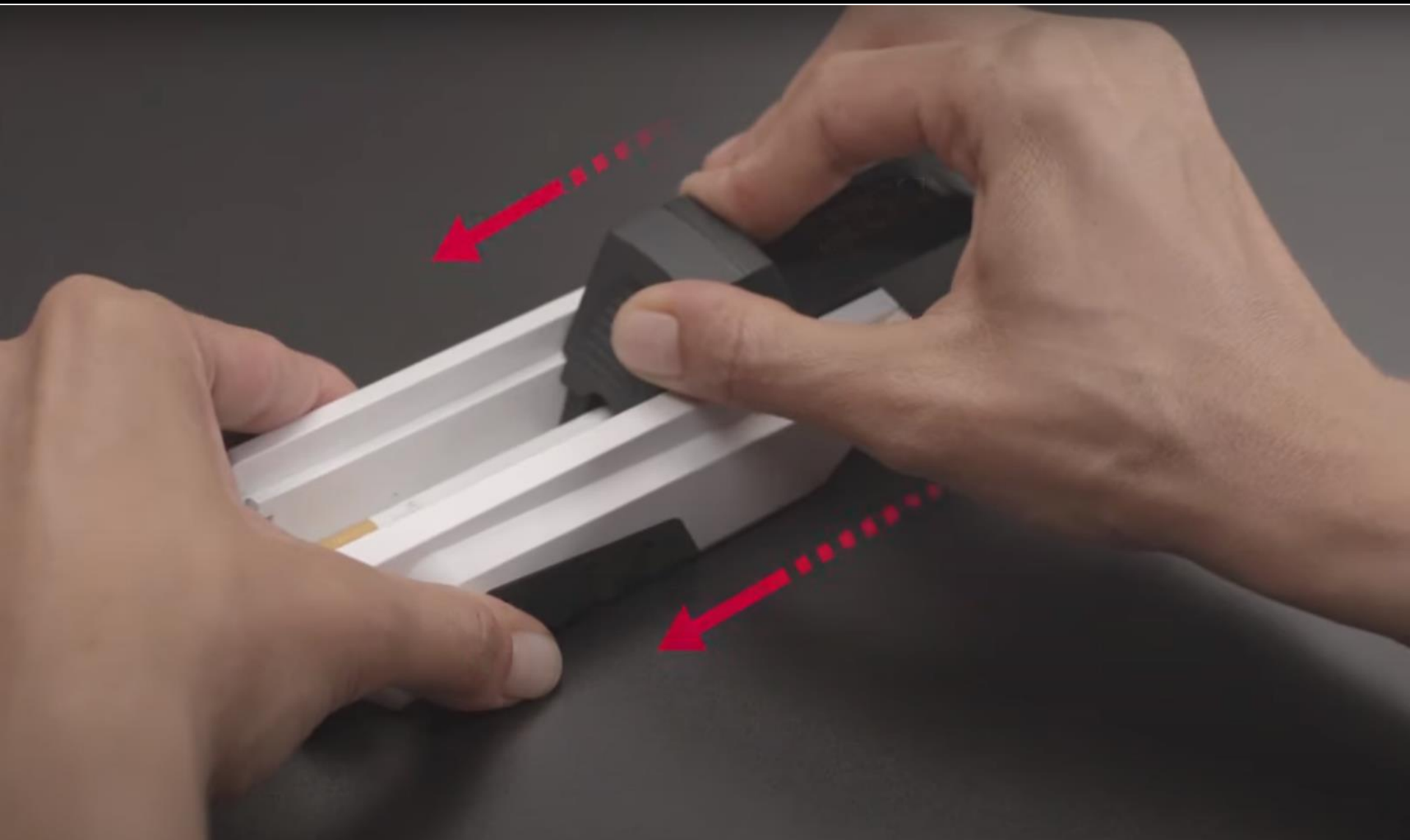
8. After closing the injector's lid, press and hold the front of the lid to fix the filter tube



9. Keep pressing the front of the lid and slide it backward to fill the filter tube with the tobacco inside of recipient



10. Keep pressing the front of the lid and slide it forward to eject the filter tube from the injector



11. Now the filter tube is filled with tobacco and you can take it out of the injector.

Prepare the injector for another filling





Please use our contact data to receive an offer from us: office@prime-com.ro; nicolau.stefan@prime-com.ro



primecom